

DATACENTER ACCESSORIES



Contents

	Page No
Category 6 U/UTP Plug lock patch cord	3
Category 6 U/UTP Key lock patch cord	5
Fibre Optic Easy front access patch panel	7
FTP/STP Angled Patch Panel	12
Power Distribution Unit Industrial Standard	13
Power Distribution Unit Industrial Standard IEC CX Series	15
Category 6A U/UTP Tool less Shutter keystone Jack	17
SC Fibre Adaptor Shutter	19
LC Fibre Adaptor Shutter	20

Category 6 U/UTP Plug Lock Patch Cord



Norden Category 6 UTP patch cords are manufactured using high quality unshielded four pair Category 6 stranded cable, and feature cable strain relief boots with a plug lock protection cap. Additionally it's having plug lock protection to avoid the link connectivity & It's highly recommendable for datacenter Solution. This patch cord when used with high performance Norden Category 6 connectivity (solid UTP cable, patch panels and work area outlets), provide superior performance capabilities of high bandwidth (Gigabit 1000Base-T and 1000Base-Tx) applications support.

This is fully backward compatible to Category 5e (Class D) products. Each patch cord is tested with Fluke tester and individual cover include with the report. Norden Category 6 Patch cord is tested for transmission frequencies of up to 250 MHz.

COMPLIANCE

IEEE 802.af and IEEE 802.3at for PoE applications
ANSI/TIA-568-C.2 and ISO/IEC-11801 (2nd Edition), IEC 61156-2, EN 50173; EN 50288-6-2 Category 6 standard

DESIGN & MATERIALS

Basic Cable Conductor	Stranded Bare Annealed Copper
Wire Insulation	SFS PE
Number Of Insulated Conductors	8
Colour Code Of Pairs	Blue x White, Orange x White, Green x White, Brown x White
Individual Pair Shield	Nil
Overall Shield	Nil
Drain Wire	None
Outer Jacket And Boots	LSOH Halogen free flame retardant or PVC compound
Jacket And Boot Colour	Per requirement
Standard Surface Marking	Includes Norden P/N, cable description
Cable O.Diameter	5.7 ± 0.2 mm
Bend Radius	>23mm without load
Storage Temperature	-20°C to +80°C
Temperature Operating Range	-20° C to +75°C
Flame Test	IEC 60332-1
Halogen Content In LSOH Cables	Null
Wire Scheme	T568B
Protection Lock	Plug Type



ELECTRICAL DATA

Impedance at 1-100MHz	100±15Ω
Impedance at 100-250MHz	100±15Ω
Conductor Resistance	< 73Ω/km
Contact Resistance	20 MΩ max.
Resistance Unbalance	2% max.
Voltage Rating	72V dc
Dielectric Strength	1KV/min.rms
Ampacity	1.0Amps max.
Insulation Resistance	150MΩ/Km
Pair to Ground Capacitance Unbalance	3.3nF/Km nom.



Category 6 U/UTP Plug Lock Patch Cord

MECHANICAL & TRANSMISSION DATA

Cable To Plug Tensile Strength	96N min.
Pulling Force	10 N max.
Durability	1000 Mating Cycles
Propagation Delay 1-250MHz	<25ns/100m

ELECTRICAL PERFORMANCE DATA

Freq. (MHz)	NEXT(dB) min.			RL(dB) min.
	2m cord	5m cord	10m cord	
1	68.0	68.0	68.0	20.0
4	65.0	65.0	65.0	21.8
10	64.8	64.2	62.8	22.5
20	60.9	58.6	57.2	23.4
30	56.2	54.9	53.6	23.0
60	50.4	49.2	48.1	20.0
100	46.4	45.3	44.4	18.0
125	44.5	43.5	42.7	17.0
150	43.2	42.2	41.1	16.2
200	40.8	39.6	39.1	15.0
250	38.8	37.9	37.6	13.8

ORDERING INFORMATION

PART NUMBER	DESCRIPTION	LENGTH
127-81101X	Category 6 U/UTP plug Lock Patch Cord PVC 01m	1m
127-81102X	Category 6 U/UTP plug Lock Patch Cord PVC 02m	2m
127-81103X	Category 6 U/UTP plug Lock Patch Cord PVC 03m	3m
127-81105X	Category 6 U/UTP plug Lock Patch Cord PVC 05m	5m
127-81110X	Category 6 U/UTP plug Lock Patch Cord PVC 10m	10m
127-81115X	Category 6 U/UTP plug Lock Patch Cord PVC 15m	15m
127-81120X	Category 6 U/UTP plug Lock Patch Cord PVC 20m	20m
127-81125X	Category 6 U/UTP plug Lock Patch Cord PVC 25m	25m
127-82101X	Category 6 U/UTP plug Lock Patch Cord LSZH 01m	1m
127-82102X	Category 6 U/UTP plug Lock Patch Cord LSZH 02m	2m
127-82103X	Category 6 U/UTP plug Lock Patch Cord LSZH 03m	3m
127-82105X	Category 6 U/UTP plug Lock Patch Cord LSZH 05m	5m
127-82110X	Category 6 U/UTP plug Lock Patch Cord LSZH 10m	10m
127-82115X	Category 6 U/UTP plug Lock Patch Cord LSZH 15m	15m
127-82120X	Category 6 U/UTP plug Lock Patch Cord LSZH 20m	20m
127-82125X	Category 6 U/UTP plug Lock Patch Cord LSZH 25m	25m

X: Colour

COLOUR CODE

BL- Blue	BR- Brown	RE- Red	PU- Purple
OR- Orange	GY- Grey	BK- Black	PI- Pink
GR- Green	WH- White	YE- Yellow	AQ- Aqua

Category 6 U/UTP Key Lock Patch Cord



Norden Category 6 UTP patch cords are manufactured using high quality unshielded four pair Category 6 stranded cable, and feature cable strain relief boots with a plug latch protection cap. Additionally it's having Key lock protection to avoid the link connectivity & It's highly recommendable for datacenter Solution. This patch cord when used with high performance Norden Category 6 connectivity (solid UTP cable, patch panels and work area outlets), provide superior performance capabilities of high bandwidth (Gigabit 1000Base-T and 1000Base-Tx) applications support.

This is fully backward compatible to Category 5e (Class D) products. Each patch cord is tested with Fluke tester and individual cover include with the report. Norden Category 6 Patch cord is tested for transmission frequencies of up to 250 MHz.

COMPLIANCE

IEEE 802.af and IEEE 802.3at for PoE applications
ANSI/TIA-568-C.2 and ISO/IEC-11801 (2nd Edition), IEC 61156-2, EN 50173; EN 50288-6-2 Category 6 standard

DESIGN & MATERIALS

Basic Cable Conductor	Stranded Bare Annealed Copper
Wire Insulation	SFS PE
Number Of Insulated Conductors	8
Colour Code Of Pairs	Blue x White, Orange x White, Green x White, Brown x White
Individual Pair Shield	Nil
Overall Shield	Nil
Drain Wire	None
Outer Jacket And Boots	LSOH Halogen free flame retardant or PVC compound
Jacket And Boot Colour	Per requirement
Standard Surface Marking	Includes Norden P/N, cable description
Cable O.Diameter	5.7 ± 0.2 mm
Bend Radius	>23mm without load
Storage Temperature	-20°C to +80°C
Temperature Operating Range	-20° C to +75°C
Flame Test	IEC 60332-1
Halogen Content In LSOH Cables	Null
Wire Scheme	T568B
Protection Lock	Key Lock



KEY LOCK

ELECTRICAL DATA

Impedance at 1-100MHz	100±15Ω
Impedance at 100-250MHz	100±15Ω
Conductor Resistance	< 73Ω/km
Contact Resistance	20 MΩ max.
Resistance Unbalance	2% max.
Voltage Rating	72V dc
Dielectric Strength	1KV/min.rms
Ampacity	1.0Amps max.
Insulation Resistance	150MΩ/Km
Pair to Ground Capacitance Unbalance	3.3nF/Km nom.



Category 6 U/UTP Key Lock Patch Cord

MECHANICAL & TRANSMISSION DATA

Cable To Plug Tensile Strength	96N min.
Pulling Force	10 N max.
Durability	1000 Mating Cycles
Propagation Delay 1-250MHz	<25ns/100m

ELECTRICAL PERFORMANCE DATA

Freq. (MHz)	NEXT(dB) min.			RL(dB) min.
	2m cord	5m cord	10m cord	
1	68.0	68.0	68.0	20.0
4	65.0	65.0	65.0	21.8
10	64.8	64.2	62.8	22.5
20	60.9	58.6	57.2	23.4
30	56.2	54.9	53.6	23.0
60	50.4	49.2	48.1	20.0
100	46.4	45.3	44.4	18.0
125	44.5	43.5	42.7	17.0
150	43.2	42.2	41.1	16.2
200	40.8	39.6	39.1	15.0
250	38.8	37.9	37.6	13.8

ORDERING INFORMATION

PART NUMBER	DESCRIPTION	LENGTH
127-91101X	Category 6 U/UTP plug Lock Patch Cord PVC 01m	1m
127-91102X	Category 6 U/UTP plug Lock Patch Cord PVC 02m	2m
127-91103X	Category 6 U/UTP plug Lock Patch Cord PVC 03m	3m
127-91105X	Category 6 U/UTP plug Lock Patch Cord PVC 05m	5m
127-91110X	Category 6 U/UTP plug Lock Patch Cord PVC 10m	10m
127-91115X	Category 6 U/UTP plug Lock Patch Cord PVC 15m	15m
127-91120X	Category 6 U/UTP plug Lock Patch Cord PVC 20m	20m
127-91125X	Category 6 U/UTP plug Lock Patch Cord PVC 25m	25m
127-92101X	Category 6 U/UTP plug Lock Patch Cord LSZH 01m	1m
127-92102X	Category 6 U/UTP plug Lock Patch Cord LSZH 02m	2m
127-92103X	Category 6 U/UTP plug Lock Patch Cord LSZH 03m	3m
127-92105X	Category 6 U/UTP plug Lock Patch Cord LSZH 05m	5m
127-92110X	Category 6 U/UTP plug Lock Patch Cord LSZH 10m	10m
127-92115X	Category 6 U/UTP plug Lock Patch Cord LSZH 15m	15m
127-92120X	Category 6 U/UTP plug Lock Patch Cord LSZH 20m	20m
127-92125X	Category 6 U/UTP plug Lock Patch Cord LSZH 25m	25m

X: Colour

COLOUR CODE

BL- Blue	BR- Brown	RE- Red	PU- Purple
OR- Orange	GY- Grey	BK- Black	PI- Pink
GR- Green	WH- White	YE- Yellow	AQ- Aqua

Fibre Optic Easy front access Patch Panel



RACK MOUNT FIBRE OPTIC PATCH PANEL

Norden EFA Fiber Optic Patch panel is designed for fiber termination and distribution. This smart design and professional engineering provides easy installation and maintenance.

FEATURES

- Easy front access .
- Front Panel equipped with adaptors.
- Sliding patch panel for easy rework and maintenance.
- Cable clamps on the inner surface for fixing cables.
- 19" rack mount 1U Size.
- Fixed Splice tray for splice utilisation designed with plexi glass top - cover & PC material .
- Patch panels for SC, LC, ST, FC, MTRJ & E2000.
- The enclosure is made of cold rolled steel sheet, with electrostatic - spraying.



COMPLIANCE

- TSE: EN 61587-1 Mechanical Structures For Electronic Equipment - Tests for IEC 60917 and IEC 60297 .
- Climatic and Environment: EN 61587-1/4.2, IEC60068-2-1, IEC60068-2-2, IEC60068-2-30,
- Earth Bond: EN61587-1/6.2.
- Flammability: EN61587-1/6.3.

DESIGN & MATERIALS

Mounting Type	Rack
Colour	Black or Beige or white
Material	Cold rolled carbon sheet steel with electrostatic spraying
Material Thickness	2mm
Rack Type	Sliding
'U' Size	1U=12/24port
Cable Port Max.	2-4
Environment Temperature- Relative	-40 to +80°C
Humidity	≤85% (30 degree)
Atmosphere Pressure	70-106KPa
Insulated Resistance	≥2*10M Ohm/500V (DC)
Intensity	≤15kv(DC) /1min.no spark-over and no flying arc
Fibre Bending Radius	≥40mm



Fibre Optic Easy front access Patch Panel



ORDERING INFORMATION

SC FIBRE PATCH PANEL

PART NUMBER	DESCRIPTION	DIMENSION (mm)
421-2SC006X	SC 06 Port Duplex EFA Fibre Patch Panel Rack Mount	50 (H) x 482 (W) x 230 (D)
421-2SC012X	SC 12 Port Duplex EFA Fibre Patch Panel Rack Mount	50 (H) x 482 (W) x 230 (D)

ST FIBRE PATCH PANEL

PART NUMBER	DESCRIPTION	DIMENSION (mm)
421-1ST006X	ST 06 Port Simplex EFA Fibre Patch Panel Rack Mount	50 (H) x 482 (W) x 230 (D)
421-1ST012X	ST 12 Port Simplex EFA Fibre Patch Panel Rack Mount	50 (H) x 482 (W) x 230 (D)

FC FIBRE PATCH PANEL

PART NUMBER	DESCRIPTION	DIMENSION (mm)
421-1FC006X	FC 06 Port Simplex EFA Fibre Patch Panel Rack Mount	50 (H) x 482 (W) x 230 (D)
421-1FC012X	FC 12 Port Simplex EFA Fibre Patch Panel Rack Mount	50 (H) x 482 (W) x 230 (D)

LC FIBRE PATCH PANEL

PART NUMBER	DESCRIPTION	DIMENSION (mm)
421-2LC006X	LC 06 Port Duplex EFA Fibre Patch Panel Rack Mount	50 (H) x 482 (W) x 230 (D)
421-2LC012X	LC 12 Port Duplex EFA Fibre Patch Panel Rack Mount	50 (H) x 482 (W) x 230 (D)

MTRJ FIBRE PATCH PANEL

PART NUMBER	DESCRIPTION	DIMENSION (mm)
421-2MT006X	MTRJ 16 Port Duplex EFA Fibre Patch Panel Rack Mount	50 (H) x 482 (W) x 230 (D)
421-2MT012X	MTRJ 12 Port Duplex EFA Fibre Patch Panel Rack Mount	50 (H) x 482 (W) x 230 (D)

E2000 FIBRE PATCH PANEL

PART NUMBER	DESCRIPTION	DIMENSION (mm)
421-1E2006X	E2000 06 Port Simplex EFA Fibre Patch Panel Rack Mount	50 (H) x 482 (W) x 230 (D)
421-1E2012X	E2000 12 Port Simplex EFA Fibre Patch Panel Rack Mount	50 (H) x 482 (W) x 230 (D)

X: BK(Black), BG(Beige), WH(White)



Fibre Optic Easy front access Compact Patch Panel



RACK MOUNT FIBRE OPTIC COMPACT PATCH PANEL

Norden EFA Fiber Optic Compact Patch panel is designed for fiber termination and distribution. This smart design and professional engineering provides easy installation and maintenance.

FEATURES

- Easy front access .
- Front Panel equipped with adaptors.
- Sliding patch panel for easy rework and maintenance.
- Cable clamps on the inner surface for fixing cables.
- 19" rack mount 1U Size.
- Fixed Splice tray for splice utilisation designed with plexi glass top - cover & PC material .
- Patch panels for SC, LC, ST, FC, MTRJ & E2000.
- The enclosure is made of cold rolled steel sheet, with electrostatic - spraying.



COMPLIANCE

- TSE: EN 61587-1 Mechanical Structures For Electronic Equipment - Tests for IEC 60917 and IEC 60297 .
- Climatic and Environment: EN 61587-1/4.2, IEC60068-2-1, IEC60068-2-2, IEC60068-2-30,
- Earth Bond: EN61587-1/6.2.
- Flammability: EN61587-1/6.3.

DESIGN & MATERIALS

Mounting Type	Rack
Colour	Black or Beige or white
Material	Cold rolled carbon sheet steel with electrostatic spraying
Material Thickness	2mm
Rack Type	Sliding
'U' Size	1U=12/24port
Cable Port Max.	2-4
Environment Temperature- Relative	-40 to +80°C
Humidity	≤85% (30 degree)
Atmosphere Pressure	70-106KPa
Insulated Resistance	≥2*10M Ohm/500V (DC)
Intensity	≤15kv(DC) /1min.no spark-over and no flying arc
Fibre Bending Radius	≥40mm



Fibre Optic Easy front access Comact Patch Panel



ORDERING INFORMATION

SC FIBRE PATCH PANEL

PART NUMBER	DESCRIPTION	DIMENSION (mm)
421-1SC012X	SC 12 Port Simplex EFA Fibre Optic Compact Patch Panel Rack Mount	50 (H) x 482 (W) x 210 (D)
421-1SC024X	SC 24 Port Simplex EFA Fibre Compact Patch Panel Rack Mount	50 (H) x 482 (W) x 210 (D)

ST FIBRE PATCH PANEL

PART NUMBER	DESCRIPTION	DIMENSION (mm)
421-1ST012X	ST 12 Port Simplex EFA Fibre Optic Compact Patch Panel Rack Mount	50 (H) x 482 (W) x 210 (D)
421-1ST024X	ST 24 Port Simplex EFA Fibre Optic Compact Patch Panel Rack Mount	50 (H) x 482 (W) x 210 (D)

FC FIBRE PATCH PANEL

PART NUMBER	DESCRIPTION	DIMENSION (mm)
421-1FC012X	FC 12 Port Simplex EFA Fibre Optic Compact Patch Panel Rack Mount	50 (H) x 482 (W) x 210 (D)
421-1FC024X	FC 24 Port Simplex EFA Fibre Optic Compact Patch Panel Rack Mount	50 (H) x 482 (W) x 210 (D)

LC FIBRE PATCH PANEL

PART NUMBER	DESCRIPTION	DIMENSION (mm)
421-1LC012X	LC 12 Port Simplex EFA Fibre Optic Compact Patch Panel Rack Mount	50 (H) x 482 (W) x 210 (D)
421-1LC024X	LC 24 Port Simplex EFA Fibre Optic Compact Patch Panel Rack Mount	50 (H) x 482 (W) x 210 (D)

MTRJ FIBRE PATCH PANEL

PART NUMBER	DESCRIPTION	DIMENSION (mm)
421-1MT012X	MTRJ 12 Port Simplex EFA Fibre Optic Compact Patch Panel RackMount	50 (H) x 482 (W) x 210 (D)
421-1MT024X	MTRJ 24 Port Simplex EFA Fibre Optic Compact Patch Panel RackMount	50 (H) x 482 (W) x 210 (D)

E2000 FIBRE PATCH PANEL

PART NUMBER	DESCRIPTION	DIMENSION (mm)
421-1E2012X	E2000 12 Port Simplex EFA Fibre Optic Compact Patch Panel RackMount	50 (H) x 482 (W) x 210 (D)
421-1E2024X	E2000 24 Port Simplex EFA Fibre Optic Compact Patch Panel RackMount	50 (H) x 482 (W) x 210 (D)

X: BK(Black), BG(Beige), WH(White)



Fibre Optic Easy front access Patch Panel



RACK MOUNT FIBRE OPTIC PATCH PANEL

Norden EFA Fiber Optic Patch panel is designed for fiber termination and distribution. This smart design and professional engineering provides easy installation and maintenance.

FEATURES

Easy front access & Front Panel equipped with adaptors.
 Sliding patch panel for easy rework and maintenance.
 Cable clamps on the inner surface for fixing cables.
 19" rack mountable in 3U Size.
 Fixed Splice tray for splice utilisation designed with plexi glass top - cover & PC material .
 Patch panels for SC & LC
 The enclosure is made of cold rolled steel sheet, with electrostatic - spraying.



COMPLIANCE

TSE: EN 61587-1 Mechanical Structures For Electronic Equipment - Tests for IEC 60917 and IEC 60297 .
 Climatic and Environment: EN 61587-1/4.2, IEC60068-2-1, IEC60068-2-2, IEC60068-2-30,
 Earth Bond: EN61587-1/6.2.
 Flammability: EN61587-1/6.3.

DESIGN & MATERIALS

Mounting Type	Rack
Colour	Black or Beige or white
Material	Cold rolled carbon sheet steel with electrostatic spraying
Material Thickness	2mm
Rack Type	Sliding
'U' Size	3U= 144 Core (72 port Duplex)
Cable Port Max.	2-4
Environment Temperature- Relative	-40 to +80°C
Humidity	≤85% (30 degree)
Atmosphere Pressure	70-106KPa
Insulated Resistance	≥2*10M Ohm/500V (DC)
Intensity	≤15kv(DC) /1min.no spark-over and no flying arc
Fibre Bending Radius	≥40mm

ORDERING INFORMATION

SC FIBRE PATCH PANEL

PART NUMBER	DESCRIPTION	DIMENSION (mm)
421-1SC072X	SC 72 Port Duplex EFA Fibre Patch Panel Rack Mount	135 (H) x 482 (W) x 230 (D)

LC FIBRE PATCH PANEL

PART NUMBER	DESCRIPTION	DIMENSION (mm)
421-1LC072X	LC 72 Port Duplex EFA Fibre Patch Panel Rack Mount	135 (H) x 482 (W) x 230 (D)

X: BK(Black), BG(Beige), WH(White)



FTP/STP Angled Patch Panel Blank Toolless

Introducing new CAT6 Shielded angled patch panels for Data center applications. These ergonomically designed panels provide aesthetic look combined with easy cable management. It exceeds TIA and ISO Component specifications, supporting network convergence protocols delivering maximum bandwidth and extending reliability for LAN, multimedia, and power over Ethernet applications. Front panel clear numbering and labels make port identification easy.

Shielded toolless Keystone jacks snapped into the 19" frame without the need for tooling device. The toolless jack termination offers fast and reliable installation of shielded cable. The rear cable management bar acts as a stress reliever and cables manager. All performance parameters, including NEXT, FEXT Attenuation and Return Loss are designed to meet the Cabling standard. 19" 1U 24 port patch panel comes with mini cable ties, cage nuts and rear cable management bar.



COMPLIANCE

EEE 802.3an, IEEE 802.3af (PoE), IEEE 802.3at (PoE+).
ISO/IEC 11281:2002 .
IEC 60603-7, TIA-968-A (formerly FCC Part 68 Subpart F) .
ANSI EIA/TIA/EIA - 310 - D.

DESIGN & MATERIALS

Panel Type	Angle
Panel Style	Blank
Mounting Style	Toolless (Module)
Panel Width	483mm (19")
Panel Height	44mm (1.75"), 1U
Panel Depth	115 mm
Panel Projection	70mm
Outlet Style	Unkeyed RJ-45
Outlets	24 Ports
Angle	180 Degree
Connector Module Holder	High Impact, Flame-Retardant Plastic Compound, UL 94 V-0.
Cover Colour and Material	Black, Powder Coated Steel

STANDARDS

Wiring Standards	EIA/TIA 568 A/B
Flammability Rating	UL 94V-0
Safety Rating	UL1863
Transmission	ISO/IEC 11801:2002 ANSI /TIA/EIA-568.B.2-10

ORDERING INFORMATION

PART NUMBER	DESCRIPTION
121-32A18024B	Cat 6 FTP/STP Angled Patch Panel Blank Toolless 24 Port



Power Distribution Unit Industrial Standard

NORDEN Power Distribution Units are designed and manufactured in a modularized way exclusively for cabinets. The product is equipped with supply socket modules meeting different systems and standards in the world. The series products can be produced accordingly to customer's special requirement, the longest dimension can reach to 4600 mm, and load can reach to double 32A. No change to the cabinet or additional parts is necessary for product installation. This is highly recommended for industrial standard.



The installation requires only pointing the product at the holes on the frame and a subsequent securing and position of bolts and nuts.

COMPLIANCE

EMC & safety:-EN 55022 Class A, EN 55024, EN 61000-3-2, EN 61000-3-3, FCC Part 15 Class A, ICES-003, PSE, UL Listed, VCCI Class A, VDE
Environmental: RoHS, REACH: Contains No SVHCs
Socket/Outlet Standard: BS1363
Cable plug: EN 60309

DESIGN & MATERIALS

Material of Construction	PC/ABS alloy, High Impact flame retardant thermoplastic –UL94-V0
Shell Material & Colour	Aluminium, black
Outlet Qty.	6 way, 8 way, 10 way, 12 way, 15 way
Plug Type	Industrial plug
Power Input Style	Left end single input style
Bracket Installation Style	Frontal Installation Style
Control function	Switch
Lead length	1.8m, 3m, 5m (other cable length available on request)
Commando Plug protection	IP 44

ELECTRICAL & ENVIRONMENTAL DATA

Current Rating	16A or 32A 250VAC
Maximum load current available in	16A or 32A
Input frequency	50 or 60 Hz
Maximum load capacity	4KW Or 8KW
Operating Environment	-5°C to +45°C
Operating Relative Humidity	5 – 95 %
Operating Elevation	0-3000 metres
Storage Temperature	-25°C to +65 °C
Storage Relative Humidity	5 – 95 %
Storage Elevation	0-15000 metres



Power Distribution Unit Industrial Standard

ORDERING INFORMATION

PART NUMBER	DESCRIPTION
16 Amp PDU	
1351-2061X	6 Way PDU with main switch, 16Amp, 1.8mtr cable length
1351-2062X	6 Way PDU with main switch, 16Amp, 3.0mtr cable length
1351-2063X	6 Way PDU with main switch, 16Amp, 5.0mtr cable length
1351-2081X	8 Way PDU with main switch, 16Amp, 1.8mtr cable length
1351-2082X	8 Way PDU with main switch, 16Amp, 3.0mtr cable length
1351-2083X	8 Way PDU with main switch, 16Amp, 5.0mtr cable length
1351-2101X	10 Way PDU with main switch, 16Amp, 1.8mtr cable length
1351-2102X	10 Way PDU with main switch, 16Amp, 3.0mtr cable length
1351-2103X	10 Way PDU with main switch, 16Amp, 5.0mtr cable length
1351-2121X	12 Way PDU with main switch, 16Amp, 1.8mtr cable length
1351-2122X	12 Way PDU with main switch, 16Amp, 3.0mtr cable length
1351-2123X	12 Way PDU with main switch, 16Amp, 5.0mtr cable length
1351-2151X	15 Way PDU with main switch, 16Amp, 1.8mtr cable length
1351-2152X	15 Way PDU with main switch, 16Amp, 3.0mtr cable length
1351-2153X	15 Way PDU with main switch, 16Amp, 5.0mtr cable length
32 Amp PDU	
1351-4061X	6 Way PDU with main switch, 32Amp, 1.8mtr cable length
1351-4062X	6 Way PDU with main switch, 32Amp, 3.0mtr cable length
1351-4063X	6 Way PDU with main switch, 32Amp, 5.0mtr cable length
1351-4081X	8 Way PDU with main switch, 32Amp, 1.8mtr cable length
1351-4082X	8 Way PDU with main switch, 32Amp, 3.0mtr cable length
1351-4083X	8 Way PDU with main switch, 32Amp, 5.0mtr cable length
1351-4101X	10 Way PDU with main switch, 32Amp, 1.8mtr cable length
1351-4102X	10 Way PDU with main switch, 32Amp, 3.0mtr cable length
1351-4103X	10 Way PDU with main switch, 32Amp, 5.0mtr cable length
1351-4121X	12 Way PDU with main switch, 32Amp, 1.8mtr cable length
1351-4122X	12 Way PDU with main switch, 32Amp, 3.0mtr cable length
1351-4123X	12 Way PDU with main switch, 32Amp, 5.0mtr cable length
1351-4151X	15 Way PDU with main switch, 32Amp, 1.8mtr cable length
1351-4152X	15 Way PDU with main switch, 32Amp, 3.0mtr cable length
1351-4153X	15 Way PDU with main switch, 32Amp, 5.0mtr cable length

X=Colour

Industrial Power Distribution Unit Surge Protector - IEC CX Series

NORDEN Power Distribution Units are designed and manufactured in a modularized way exclusively for cabinets. The product is equipped with supply socket modules meeting different systems and standards in the world. The series products can be produced accordingly to customer's special requirement, the longest dimension can reach to 4600 mm, and load can reach to double 32A. No change to the cabinet or additional parts is necessary for product installation. Additionally this design has a surge protector to protect electrical devices from voltage spikes. Also this PDU socket can be the combination of C13, C19 & C20.

The installation requires only pointing the product at the holes on the frame and a subsequent securing and position of bolts and nuts.

COMPLIANCE

EMC & safety: -EN 55022 Class A, EN 55024, EN 61000-3-2, EN 61000-3-3, FCC Part 15 Class A,
IEC 320 C13, IEC 320 C14, IEC 320 C19, IEC 320 C20
Environmental: RoHS, REACH: Contains No SVHCs
Socket/Outlet Standard: IEC C13, IEC C19
Cable plug: EN 60309



DESIGN & MATERIALS

Material of Construction	PC/ABS alloy, High Impact flame retardant thermoplastic –UL94-V0
Shell Material & Colour	Aluminium, black
Outlet Qty.	6 way, 8 way, 10 way, 12 way, 15 way
Power Input Style	Left end single input style
Bracket Installation Style	Frontal Installation Style
Control function	Switch
Lead length	1.8m, 3m, 5m (other cable length available on request)
Surge Protector	Yes
Plug type	Commando Industrial

ELECTRICAL & ENVIRONMENTAL DATA

Current Rating	16A & 32 A 230VAC
Maximum load current available in	16A & 32 A
Input frequency	50 or 60 Hz
Maximum load capacity	8KW
Operating Environment	-5°C to +45°C
Operating Relative Humidity	5 – 95 %
Operating Elevation	0-3000 metres
Storage Temperature	-25°C to +65 °C
Storage Relative Humidity	5 – 95 %
Storage Elevation	0-15000 metres



Industrial Power Distribution Unit Surge Protector - IEC CX Series

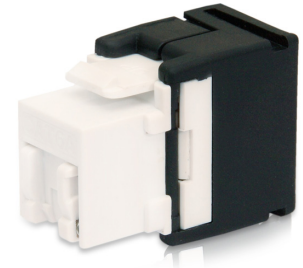
ORDERING INFORMATION

PART NUMBER	DESCRIPTION
16 Amp PDU	
1362-210A08B021X	10 Way PDU with IEC (C13*8+C19*2),16 Amp,1.8 mtr cable length,Vertical Installation
1362-210A08B041X	12 Way PDU with IEC (C13*8+C19*4),16 Amp,1.8 mtr cable length,Vertical Installation
1362-210A20B041X	24 Way PDU with IEC (C13*20+C19*4),16 Amp,1.8 mtr cable length,Vertical Installation
1362-210A08B022X	10 Way PDU with IEC (C13*8+C19*2),16 Amp,3.0 mtr cable length,Vertical Installation
1362-210A08B042X	12 Way PDU with IEC (C13*8+C19*4),16 Amp,3.0 mtr cable length,Vertical Installation
1362-210A20B042X	24 Way PDU with IEC (C13*20+C19*4),16 Amp,3.0 mtr cable length,Vertical Installation
1362-210A08B023X	10 Way PDU with IEC (C13*8+C19*2),16 Amp,5.0 mtr cable length,Vertical Installation
1362-210A08B043X	12 Way PDU with IEC (C13*8+C19*4),16 Amp,5.0 mtr cable length,Vertical Installation
1362-210A20B043X	24 Way PDU with IEC (C13*20+C19*4),16 Amp,5.0 mtr cable length,Vertical Installation
32 Amp PDU	
1362-410A08B021X	10 Way PDU with IEC (C13*8+C19*2),32 Amp,1.8 mtr cable length,Vertical Installation
1362-410A08B041X	12 Way PDU with IEC (C13*8+C19*4),32 Amp,1.8 mtr cable length,Vertical Installation
1362-410A20B041X	24 Way PDU with IEC (C13*20+C19*4),32 Amp,1.8 mtr cable length,Vertical Installation
1362-410A08B022X	10 Way PDU with IEC (C13*8+C19*2),32 Amp,3.0 mtr cable length,Vertical Installation
1362-410A08B042X	12 Way PDU with IEC (C13*8+C19*4),32 Amp,3.0 mtr cable length,Vertical Installation
1362-410A20B042X	24 Way PDU with IEC (C13*20+C19*4),32 Amp,3.0 mtr cable length,Vertical Installation
1362-410A08B023X	10 Way PDU with IEC (C13*8+C19*2),32 Amp,5.0 mtr cable length,Vertical Installation
1362-410A08B043X	12 Way PDU with IEC (C13*8+C19*4),32 Amp,5.0 mtr cable length,Vertical Installation
1362-410A20B043X	24 Way PDU with IEC (C13*20+C19*4),32 Amp,5.0 mtr cable length,Vertical Installation

X = Color

Category 6A UTP Tool Less Shutter Keystone Jack

Norden Category 6A UTP tool less shutter Keystone Jacks are designed to reduce the Insertion loss & alien cross talk in order to provide maximum flexibility and high performance for all 10G Ethernet applications and are available in a 180° orientation with back interconnection of Dual IDC blocks in universal pin/pair assignment. 180° orientation provides perfect termination with minimum distance to the IDC. Our tool-less termination allows all eight conductors to be terminated simultaneously when the termination cap is pressed into place. This is tested to 500MHz range over 100m and supports T568 A&B wiring & Easy installation. Stronger & transparent IDC Cover is an added advantage for protection for datacenter solution. Norden Category 6A KSJ is also backward compatible supporting current Category 6, Category 5E, and voice network applications.



COMPLIANCE

IEEE P802.3an and TIA/EIA TSB155 (draft) Category 6A specifications and Class E channel requirements of 2nd edition.
IEC 60603-7-5, ISO/IEC 11801 and CENELEC EN50173-1, the Cat 6A channel requirements of TIA/EIA-568-B.2-10

DESIGN & MATERIALS

Colour	Black and White or others available upon request
Size	35.1mm X 17.1mm X 25.2mm
RJ45 Port	11.8mm X 9.8mm
Angle	180 Degree
Temperature -Storage	-40°C - +70°C
Temperature -Operation	0°C - +65°C
Operating Humidity Range	-10 °C To +60°C
Housing Material	High Impact, Flame-Retardant Plastic Compound, UI 94 V-0.
IDC Type	Dual (110 Or Krone) Type
IDC Wire Gauge	22-26 AWG, Solid or Stranded
Colour Coding	As Per 568 A/B Standard
Spring Wire	Phosphor Bronze Alloy Plated With 50 Micro-Inch Of Gold over 70-100 Micro-Inch Of Nickel
IDC	Phosphor Bronze Alloy With 100 Micro-Inch 100% Nickel Plating
Conductor Termination	>200
Insulation Diameter	0.7-1.4mm

STANDARDS

Flammability Rating	UL 94 V-0
Safety Rating	UL 1863



Category 6A UTP Tool Less Shutter Keystone Jack

ELECTRICAL DATA

Current Rating	1.5A
Insulation Resistance	500 MΩ min 100 V d.c.
Voltage Rating	230V rms max.
Dielectric Voltage	1000 V dc or ac, 60 Hz for 1 min (Contact-Contact)
Plug/Jack Contact Resistance	20 mΩ per contact
IDC Contact Resistance	<5 mΩ max.

MECHANICAL & TRANSMISSION DATA

Insertion/Extraction Life	750 Cycles minimum
Retention	50 N
Propagation Delay	2.5ns max./1-500MHz
Propagation Delay Skew	1.25ns max./1-500 MHz
Coupling Attenuation	45 dB @ 30 - 500 MHz

ELECTRICAL PERFORMANCE DATA OF CHANNEL

Freq. MHz	Attenuation dB/100m@20°C	NEXT dB	PS NEXT dB	RL dB	ACR dB
1	1.7	86.3	83.3	26.0	84.6
4	3.4	85.0	83.0	29.0	75.6
10	5.4	77.3	74.3	31.0	71.9
20	7.6	70.0	67.0	30.0	62.4
31.25	9.7	68.0	65.0	29.8	58.3
100	18.0	65.3	62.3	27.1	47.3
150	23.6	62.0	59.8	26.0	38.4
200	27.4	59.0	57.2	25.0	31.6
250	31.0	57.6	54.6	25.2	26.6
300	34.2	55.0	52.0	24.0	20.3
400	40.0	53.0	51.8	21.8	13.0
500	42.2	52.0	50.0	21.8	9.8

ORDERING INFORMATION

PART NUMBER	DESCRIPTION
122-41T181DX	Category 6a UTP Tool Less Shutter Keystone Jack 180D

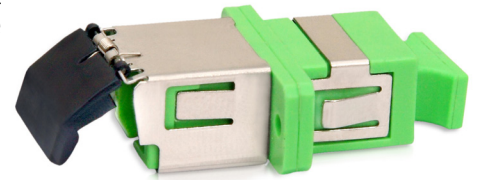
X: BK(Black), BL(Blue), GN(Green), GY(Gray), RD(Red), WH(White), YL(Yellow)

SC Fibre Adaptor Shutter



SC FIBRE OPTIC SHUTTER ADAPTOR

Norden SC Fibre Optic Adaptors are available with shutter for datacenter Solution and it is including single mode and multimode, Zirconia sleeve and Bronze sleeve, Simplex and Duplex to female SC Fibre optic adaptor and hybrid SC Fibre optic adaptors are available.



STANDARD COMPLIANCE

TIA/EIA-568-C.3, TIA/EIA-604 FOCIS-3

APPLICATIONS

- CATV
- Telecommunication networks, Local Area Networks (LANs)
- Metro networks, Data processing networks
- Data Center Solution
- Industrial, military and medical

DESIGN & MATERIALS

Adaptor material	High Impact flame retardant thermoplastic UL94-V0
Dimension (H X W x D)	0.98" x 0.58" x 1.35"
Split Sleeve Material	Phosphor Bronze or Zirconia ceramic(for Single mode applications)
Spring Plate	Stainless steel
Capillary diameter tolerance(Single Mode)	126 ± 0.5µm
Capillary diameter tolerance(Multimode)	127± 0.5µm
Operating Temperature	-40 to +75° C
Storage Temperature:	-40 to +85° C
Mating durability	>500 Mating Cycles

ORDERING INFORMATION

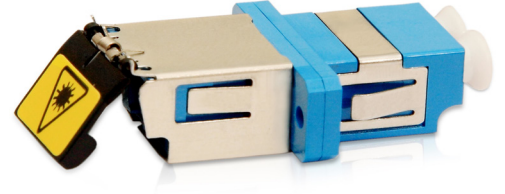
PART NUMBER	DESCRIPTION
351-SSCSCSH	SC Singlemode Simplex Shutter Adaptor
351-MSCSCSH	SC Multimode Simplex Shutter Adaptor
352-SSCSCSH	SC Singlemode Duplex Shutter Adaptor
352-MSCSCSH	SC Multimode Duplex Shutter Adaptor



LC Fibre Adaptor Shutter

LC FIBRE OPTIC SHUTTER ADAPTOR

Norden LC fibre optic adaptors are available with Shutter for datacenter Solution .There are simplex LC adaptors and duplex LC adaptors, usually duplex LC fibre adaptors are with SC footprint. The LC fibre adaptors colours are same as SC fibreoptic adaptors: blue for single mode PC, beige for multi mode PC and green for single mode APC. LC fibre optic adaptors are with bronze sleeve for multimode and Zirconia sleeve for single mode.



APPLICATIONS

CATV
Active device/Transceiver, Telecommunication networks
Multimedia Data processing networks
Data Center Solution
Test equipment, Premise installations
Gigabit Ethernet

DESIGN & MATERIALS

Adaptor Material	High Impart flame retardant thermoplastic UL94-V0
Dimension (H X W X D)	0.64" x 0.58" x 1.41"
Split Sleeve Material	Phosphor Bronze or Zirconia ceramic (for Single mode applications)
Capillary Diameter Tolerance (Single Mode)	126 ± 0.5µm
Capillary Diameter Tolerance(Multimode)	127± 0.5µm
Operating Temperature	-40 to +85° C
Storage Temperature:	-40 to +85° C
Mating Durability	>500 Mating Cycles

ORDERING INFORMATION

PART NUMBER	DESCRIPTION
351-SLCLCSH	LC Singlemode Simplex ShutterAdaptor
351-MLCLCSH	LC Multimode Simplex Shutter Adaptor
352-SLCLCSH	LC Singlemode Duplex Shutter Adaptor
352-MLCLCSH	LC Multimode Duplex Shutter Adaptor